

ORDERING NO. : KH – 2204LP – 2 1 1 R

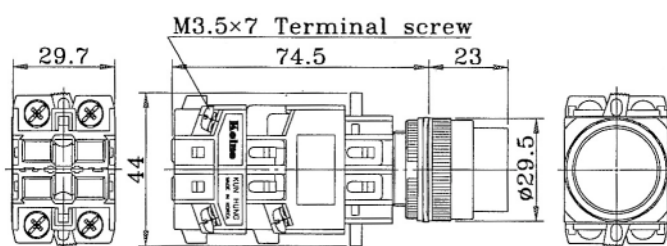
NO. of NC contact

NO. of NO contact

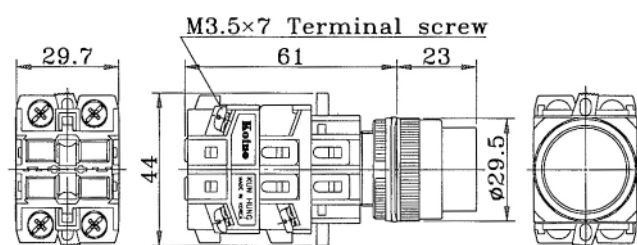
	ACTUATOR	LIGHT SOURCE	INPUT VOLTAGE	COLOR
Push Button (Built-In Transformer) 	KH – 2204 – 1	FILAMENT	110VAC	Filament Lamp : Red : R Green : G Yellow : Y Blue : B White : W LED Lamp : Red : R Green : G Yellow : Y
	KH – 2204 – 2		220VAC	
	KH – 2204L – 1	LED	110VAC	
	KH – 2204L – 2		220VAC	
Push Button (Full Voltage) 	KH – 2204 – TL	FILAMENT	FULL VOLTAGE	
	KH – 2204L – TL	LED		
Push Button (Built-In Transformer) 	KH – 2204P – 1	FILAMENT	110VAC	
	KH – 2204P – 2		220VAC	
	KH – 2204LP – 1	LED	110VAC	
	KH – 2204LP – 2		220VAC	
Push Button (Full Voltage) 	KH – 2204P – TL	FILAMENT	FULL VOLTAGE	
	KH – 2204LP – TL	LED		

DIMENSION

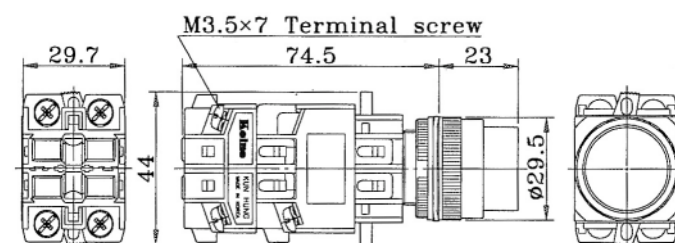
KH-2204



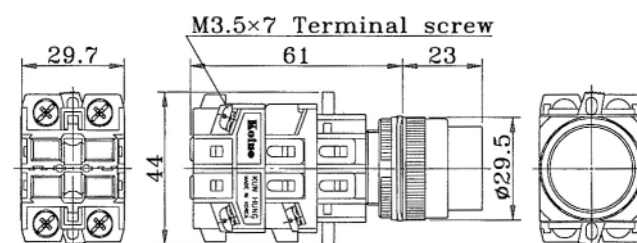
KH-2204-TL



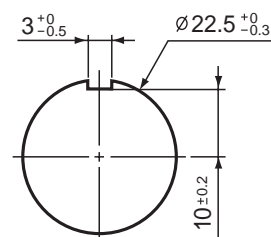
KH-2204P



KH-2204P-TL



Panel Cut-out



- The secondary voltage of built-in transformer is 6V
- Material
 - Body : Nylon glass
 - Contact block : Nylon glass
 - Ring : Nylon glass
 - Cab : AS
- Contact block combinations
 - Max. 4 contact block combination
- The input voltage should be notified when full voltage pilot lamps are ordered.

FILAMENT	LED
6.3V AC/DC	6V AC/DC
12V AC/DC	12V AC/DC
24V AC/DC	24V AC/DC